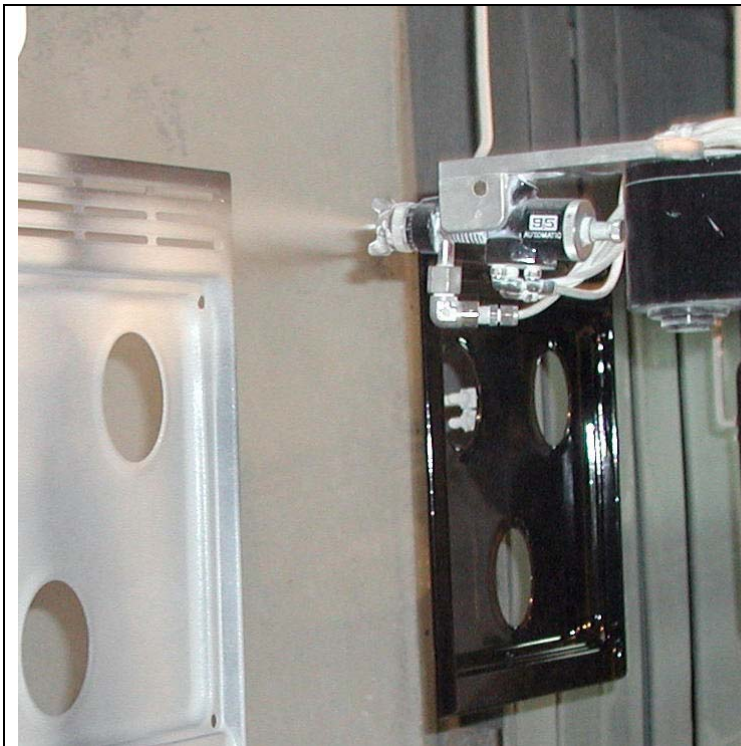


# Combining the Art of the Painter with the Precision of Automation



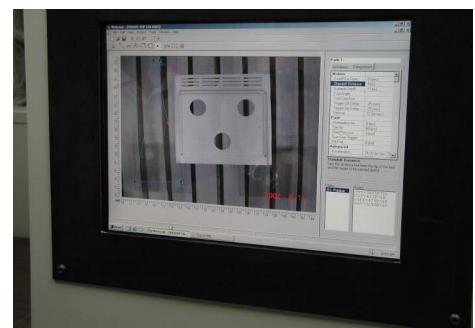
An Artomation 3 axis upright gun mover applies a porcelain color coat to stove tops providing savings in both labor and material

Other painting systems waste money in paint, labor, and rejects. Artomation's precision software allows you to develop an acceptable paint process that is repeatable. Your parts will always be painted identically, regardless of the time of day, or the person running the paint line.

Introducing ARTomation Precision Coating Systems

Advanced easy to use windows based software

Now you can get the highest possible transfer efficiency, precise and consistent film thicknesses, fewer rejects, and greatly enhanced quality from your spray coating system



ARTomation technology puts you in control of the painting process

ARTomation lets you dynamically adjust all of the parameters that influence the coating process, allowing the successful development of good recipes.

For instance, with the click of a mouse you can change settings for gun motion, gun triggering, paint flow rate, atomizing air pressure, fan pattern width, and KV set point (electrostatic charging). Any or all of these settings can be controlled concurrently anywhere on the gun or atomizer's travel path. This allows you to develop and record a preset recipe of all the gun parameters needed relative to the part's geometry.

Path 1

AlphabeticCategorized

Motion	
Flash Time	7 (sec)
Pre-Path Trigger Time	8 (sec)
Standoff Distance	10 (in)
Velocity	24 (in/sec)

Paint	
Atomization Air	35 (psi)
Fan Air	20 (psi)
Fluid Flow	15 (cc/min)
Gun Trigger	On
KiloVolt	75 (kV)

Standoff Distance

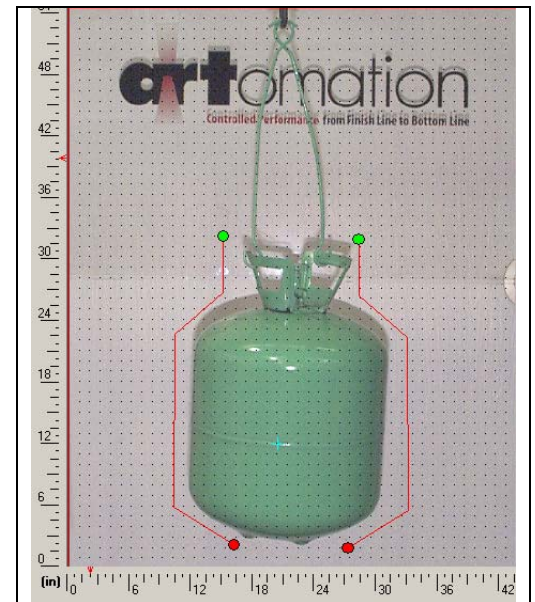
Sets the distance between the tip of the tool and the target to be painted (path).

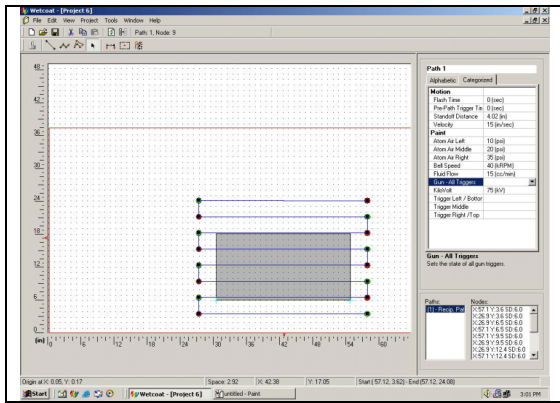
With Wetcoat application software, programming your ARTomation coating system is simple with intuitive and easy to follow Windows based toolbars and pull down menus

## No Other System Can Do It Like ARTomation Can – It's So Unique, It's Patented

You can import a digital picture of the part to be coated, into the personal computer housed in the controller, then draw the areas you desire to coat in the Artomation software program.

Pre-set Drawing Programs are Available – Artomation software allows an operator easy access to get started in developing the atomizer's motion. Pre-developed paths for Vertical and Horizontal reciprocating motions are available, plus many other specialized motion profiles.

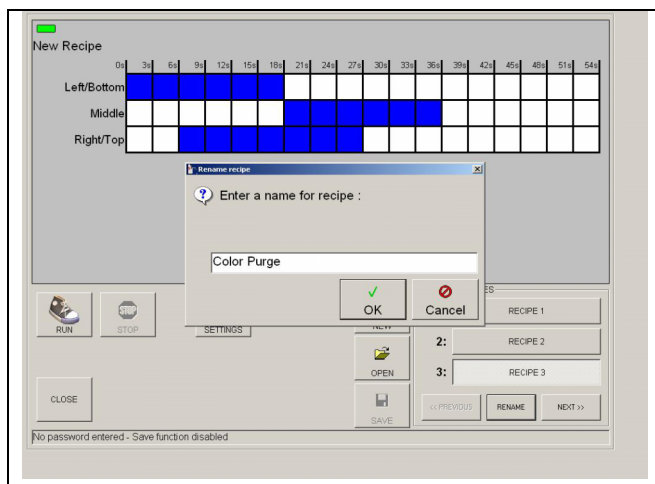
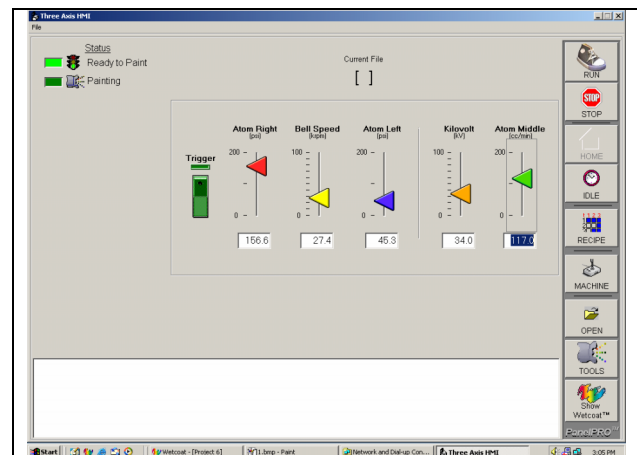




The operator has the complete freedom of adjusting any setting to the spray guns, including the distance from the part and the speed and direction of the spray gun or atomizer as it passes over the part. This simplicity gives you an enhanced ability to achieve a consistent film build, while minimizing the manual touch up required.

Most importantly, the ARTomation technology will save you thousands of dollars in material consumption, energy, labor, and rejects.

**Data Base Retrieval for ISO9000** – With every program created, the software keeps a record of the gun settings and material consumption. Your entire production run can now be traced down to the date and time a part was coated, the material used, and the settings to the spray guns. You can also track other information such as temperature and humidity. Any sensing device's information can be cataloged into the database for later retrieval.



### Fast Color Change & Flush Routine –

Automatic color change sequences are developed with pre-set times for purge, solvent flush, and re-fill with the next color, which allows for accurate non-contaminating color changes.

This color change sequence resides in the pre-set recipe for that color, and is accessed when that recipe is selected. Times are variable depending on color, viscosity, etc.



## Multi-Axis Gun Movers – Gantry Style for Maximum Flexibility.

ARTomation gun movers are the premiere gantry-styled machines built specifically for paint finishing and coating applications. The ARTomation gantry-styled machines have virtually no limit to the size of the work envelope. These rugged, heavy duty machines are servo-controlled and mounted on heavy wall tubular welded steel frames.

The Artomation gantry style servo-drive machine can often replace 2 floor mounted robots because of its unlimited linear size, line tracking ability, and the capability to carry multiple spray guns.



The ARTomation controller is the central brain of a complete precision coating system. It is designed with components having the highest level of operational reliability. The electronics and drives are mounted in a shielded steel cabinet, protecting the components from dirt and dust in the plant atmosphere.

These state of the art machines use open accessibility and solid, robust construction of off-the-shelf components coupled with simple straight forward mechanics. This keeps maintenance at a minimum.

**“Combining the Art of the Painter with the Precision Of Automation”**



[www.artomation.com](http://www.artomation.com)

6909 Engle Rd Unit #7  
Cleveland, OH 44130

Phone: 440-234-1988  
Fax: 440-234-2330

2005